



Revolution Apex™

The new way to your best image.

Revolution Apex delivers an uncompromised set of clinical solutions for your most challenging patients to ensure you achieve your best images for all patients.

Elevate with Apex

- 1 **Uncompromised image quality.** Even for morbidly obese patients.
- 2 **Ultrafast exam with ultra-low dose.** In less than one second. With full 50 cm FOV.
- 3 **1-beat cardiac.** At any heart rate. Even in atrial fibrillation. With low dose.
- 4 **High-resolution imaging.** Even with heavily calcified coronaries, plaque and stents.
- 5 **CT TAVI/TAVR planning.** Single scan. Single injection. With low contrast volume.
- 6 **Dynamic whole-heart myocardial perfusion.** Without shuttle. With low dose.
- 7 **Whole brain coverage for acute stroke workup.** Less than 5 minutes.
- 8 **Pediatric imaging.** Without sedation. With the lowest dose possible.
- 9 **Spectral imaging.** Even with larger patients. With speed.
- 10 **Metal artifact reduction.** Both in single energy and dual energy.

Highlights include:

TrueFidelity CT images: Using the latest in Deep Learning Image Reconstruction, TrueFidelity images deliver breakthrough image quality you need to make a powerful first impression every time.

Quantix™ 160 Tube with wide coverage: the first CT Scanner that can deliver power and coverage in one scan. With max X-ray output of 1,300 mA and 16 cm of coverage, achieve superior quality imaging on every patient.

Low kV imaging: 70kV imaging applies to larger patients with 1300 mA peak power, for better contrast visualization even with low contrast volume and lower radiation dose.

HyperDrive: Scan the fastest with 437 mm/s across a full 50 cm FOV acquiring trauma scans with speed & sub-second free-breathing chest studies.

Smart Technologies: a full suite of applications to optimize your everyday. Smart Flow, Smart Dose, Smart Cardiac, Smart Spectral, Smart Kids, Smart Stroke, Smart Trauma, Smart Artifact Reduction.

Temporal
Spectral

Power
+
Deep Learning

Spatial
Coverage

Cardiovascular:

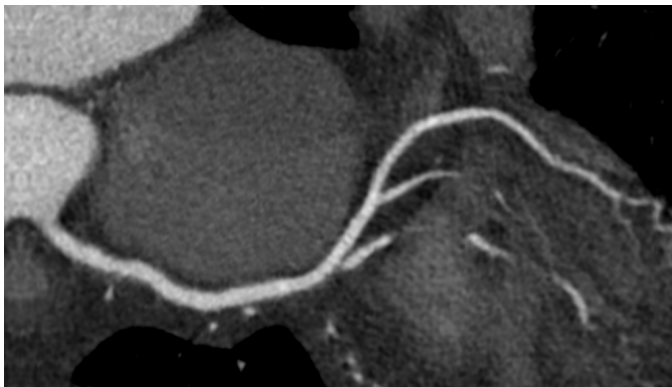
1-Beat, High Definition, motion free coronary imaging at any heart rate with low dose.

- Whole heart coverage in one axial scan
- 1-beat Auto Gating for streamlined workflow
- Smart Phase to find the phase with the least motion -automatically
- SnapShot Freeze 2*: whole heart motion correction
- Smart Arrhythmia Management: avoid scanning irregular heartbeats
- Best in class spatial resolution 0.23 mm

The whole heart dynamic perfusion provides both anatomical and functional information of obstructive CAD.

TAVR/TAVI planning with mixed mode acquisition for a single injection, single scan

Calcium Scoring in one beat



Motion free coronaries with variable heart rate 84-100 BPM

Emergency & Trauma:

Triple Rule Out in under three seconds

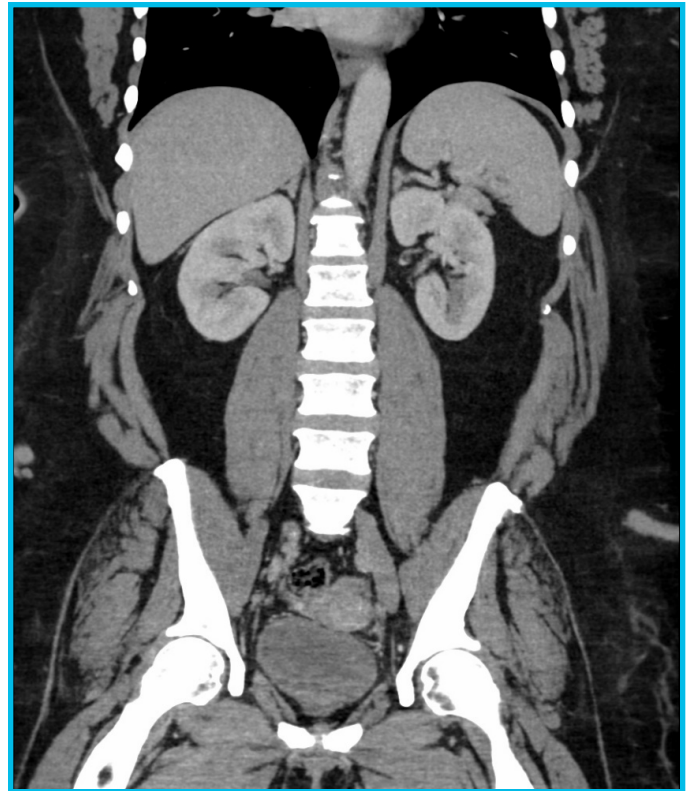
Smart Trauma to prioritize recon for scans and faster reconstruction throughput

Flexible scanning modes and HyperDrive up to 437 mm/s

Pediatrics:

Split second scanning and many studies done in one rotation with no table movement

70 kV scan mode to minimize dose while preserving excellent image quality.



TrueFidelity CT images. 0.625mm thin slice. 62 BMI.

Body & Oncology:

Whole organ coverage at low dose for even morbidly obese patients

Dynamic 4D acquisition to assess vascular flow

70 kV imaging for excellent contrast to noise ratio and optimizing dose.

Neurology:

Routine high quality whole brain imaging in a single rotation with excellent grey white matter differentiation.

Smart Stroke: Stroke-dedicated hardware, software and post-processing solution to reduce "CT scan-to-report" time and "door-to-treatment" time

Whole brain perfusion with 70 kV, smart collimation & variable sampling to achieve accurate perfusion values with lower dose.

Comprehensive cardiovascular and neuro assessment to acquire cardiac function, CCTA and a head-neck angiography in a single exam.

*SnapShot Freeze 2 will be available on Smart Subscription.

© 2019 General Electric Company - All rights reserved.

GE Healthcare reserves the right to make changes in specifications and features shown herein, or discontinue the product described at any time without notice or obligation. Contact your GE Healthcare representative for the most current information. GE and the GE Monogram, are trademarks of General Electric Company. GE Healthcare, a division of General Electric Company. GE Medical Systems, Inc., doing business as GE Healthcare.

Not available for sale in all regions.

JB66918XX